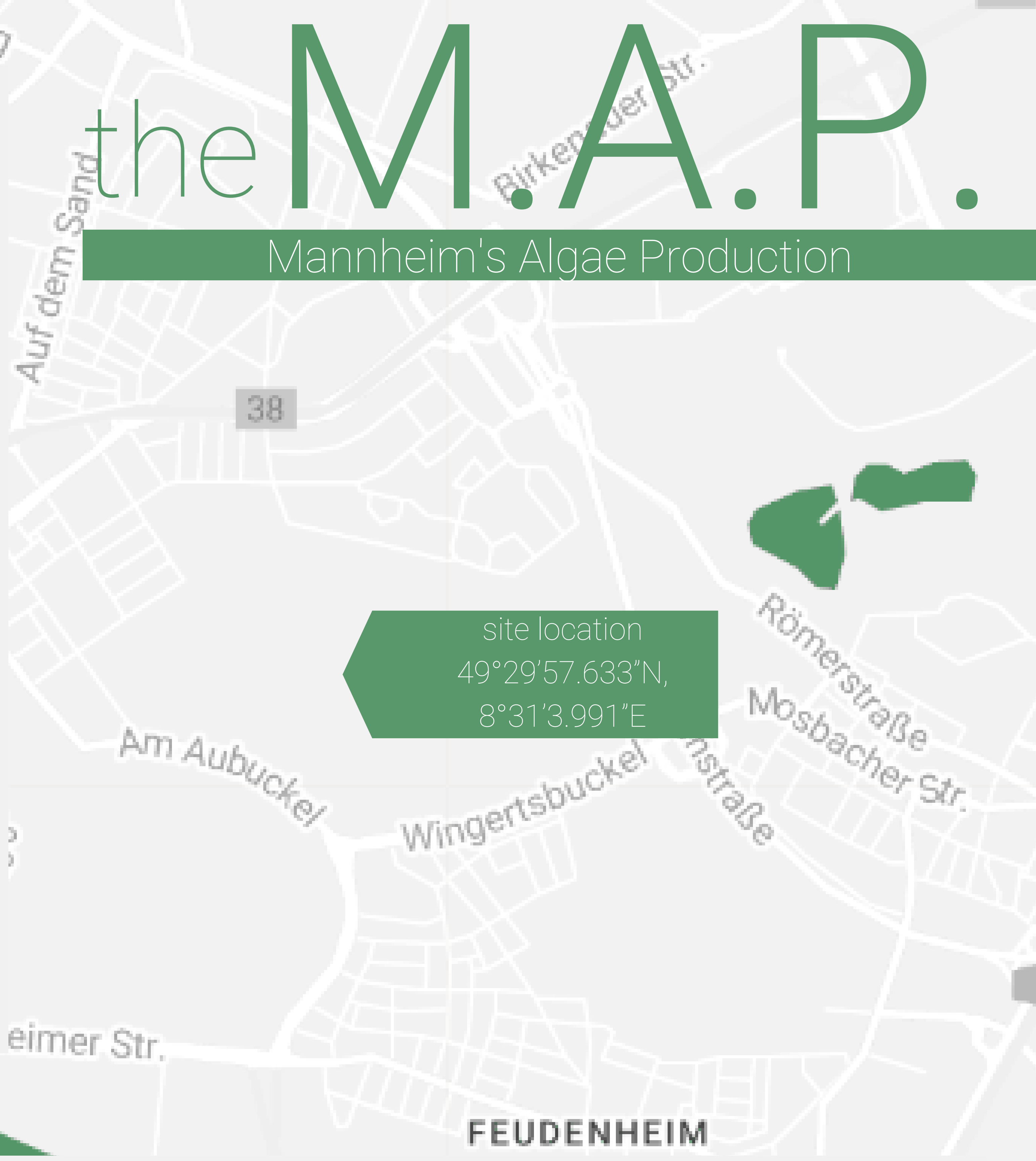
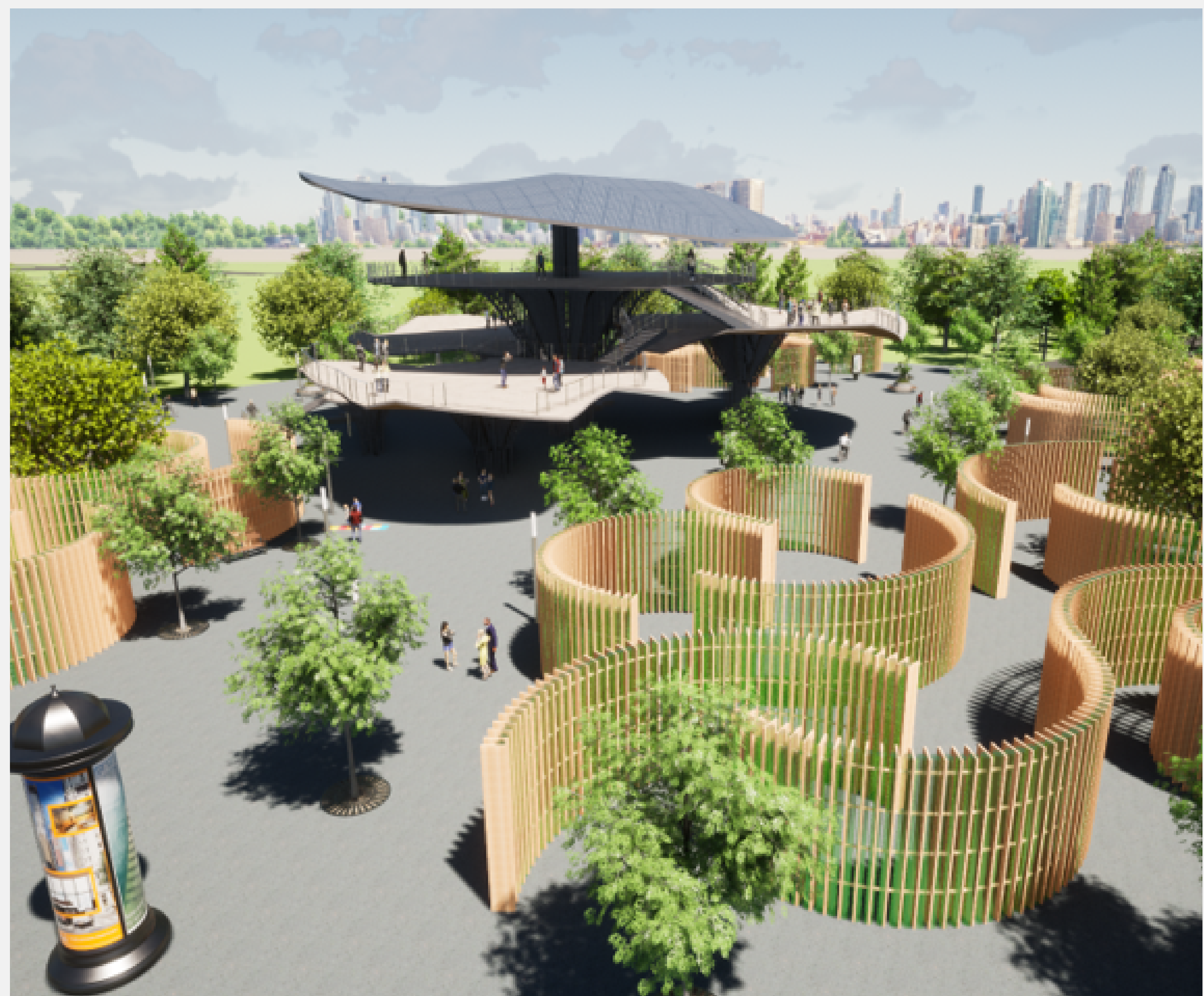


the M.A.P.

Mannheim's Algae Production



site location
49°29'57.633"N,
8°31'3.991"E

Mannheim

Our team sought to turn this forgotten site into a work of art by being inspired by the natural growth and decay that took place over the years. Our design incorporates mushroom-like structures that appear to be growing out of the site along with everything else. These large structures allow users to move about the site, experiencing different perspectives on their journey. The structure houses our hydro catching devices that help us collect and store water for the main renewable energy resource we have on our site. Set away from our site, we developed a large labyrinth. in which users can get lost in the intricacy that is our algae oil production renewable energy resource. The walls of the labyrinth are inset with clear glass tubes that hold our algae oil biofuel production systems.